

PRODUCT INFORMATION PACKET

Model No: 5K49FN6381

Catalog No: K2101

0.33 HP Explosion Proof Motor, 3 phase, 1200 RPM, 230/460 V, 56 Frame, EPFC
Explosion Proof NEMA Motors

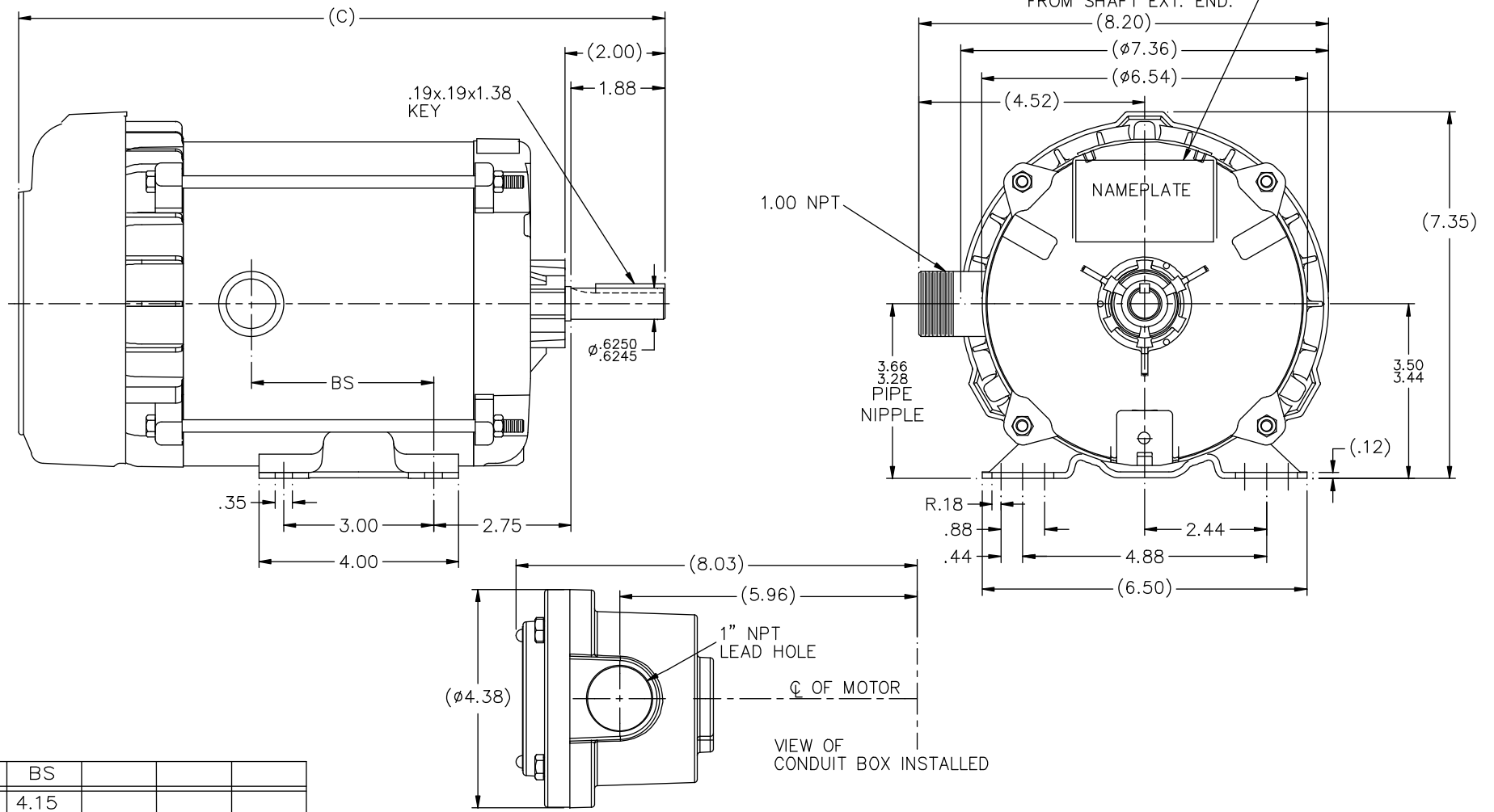


Nameplate Specifications

Output HP	0.33 Hp	Output KW	0.25 kW
Frequency	60 Hz	Voltage	230/460 V
Current	2.2/1.1 A	Speed	1140 rpm
Service Factor	1	Phase	3
Efficiency	62 %	Power Factor	48.2
Duty	Continuous	Insulation Class	F
Design Code	B	KVA Code	M
Frame	56	Enclosure	Explosion Proof Fan cooled
Thermal Protection	Automatic	Ambient Temperature	40 °C
Drive End Bearing Size	6203	Opp Drive End Bearing Size	6203
UL	UL Listed And CSA Certified	CSA	N
CE	N	IP Code	54
Hazardous Location	EXP PROOF CL I GR C&D CL II GR F&G T3B		

Technical Specifications

Electrical Type	Squirrel Cage Induction Run	Starting Method	Across The Line
Poles	6	Rotation	Reversible
Resistance Main	52.4 Ohms	Mounting	Rigid base
Motor Orientation	Horizontal	Drive End Bearing	Ball
Opp Drive End Bearing	Ball	Frame Material	Rolled Steel
Shaft Type	NEMA 56	Overall Length	13.44 in
Frame Length	6.31 in	Shaft Diameter	0.625 in
Shaft Extension	2 in	Assembly/Box Mounting	F1 ONLY
Connection Drawing	A-EE7335-GE	Outline Drawing	B-104189GE-631

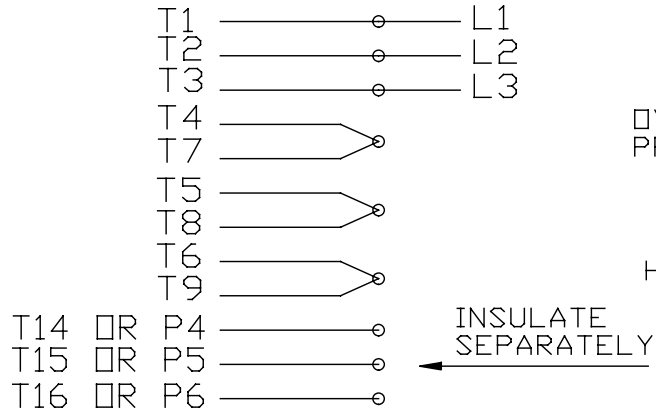


DASH	(C)	BS			
631	13.44	4.15			
681	13.94	4.65			
731	14.44	5.15			
781	14.94	5.65			
831	15.44	6.15			
881	15.94	6.65			
931	16.44	7.15			
981	16.94	7.65			

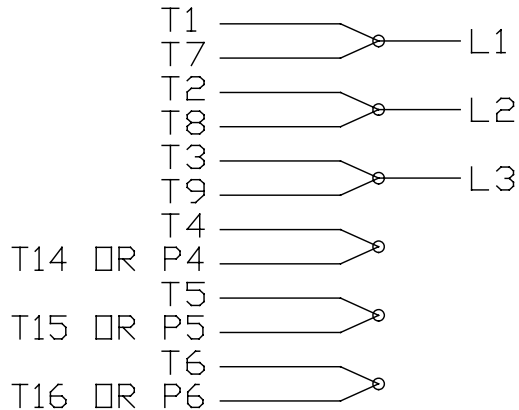
		TOLERANCES UNLESS SPECIFIED		REGAL-BELOIT CORPORATION		DRAWING NO. 11-30-04	
		DEC.	INCHES	REGAL-BELOIT CORPORATION		CHK	ML 01-12-05
4	COND. BOX INSTALLED VIEW UPDATED PER ECR-0044571	UD	10/15/13	ST	.X	±.1	APPD DRN 01-13-05
3	REVISED C'BOX PER CN40784A	JJB	02/23/2007	ML	.XX	±.03	SCALE 1=2
2	CHANGED LOGO TO REGAL BELOIT	TAT	09-07-2005	ML	.XXX	±.005	REF
1	ADD GE TO PART NO	MJK	12/20/2004		.XXXX	±.0005	FMF
NO.	REVISION	BY & DATE	CHK	ANG	±7'30"	FINISH	PREV
THIS DRAWING IN DESIGN AND DETAIL IS OUR PROPERTY AND MUST NOT BE USED EXCEPT IN CONNECTION WITH OUR WORK ALL RIGHTS OF DESIGN AND INVENTION ARE RESERVED THIS IS AN ELECTRONICALLY GENERATED DOCUMENT - DO NOT SCALE THIS PRINT				RFP	CAD FILE 104189ge		SIZE DRAWING NO. PAGE OF REV.
				DIST	WP	B	104189GE 4

EE7335

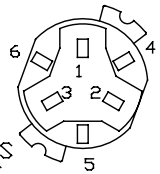
HIGH VOLTAGE CONNECTIONS



LOW VOLTAGE CONNECTIONS



THREE PHASE - DUAL VOLTAGE MOTOR WITH OVERLOAD PROTECTOR

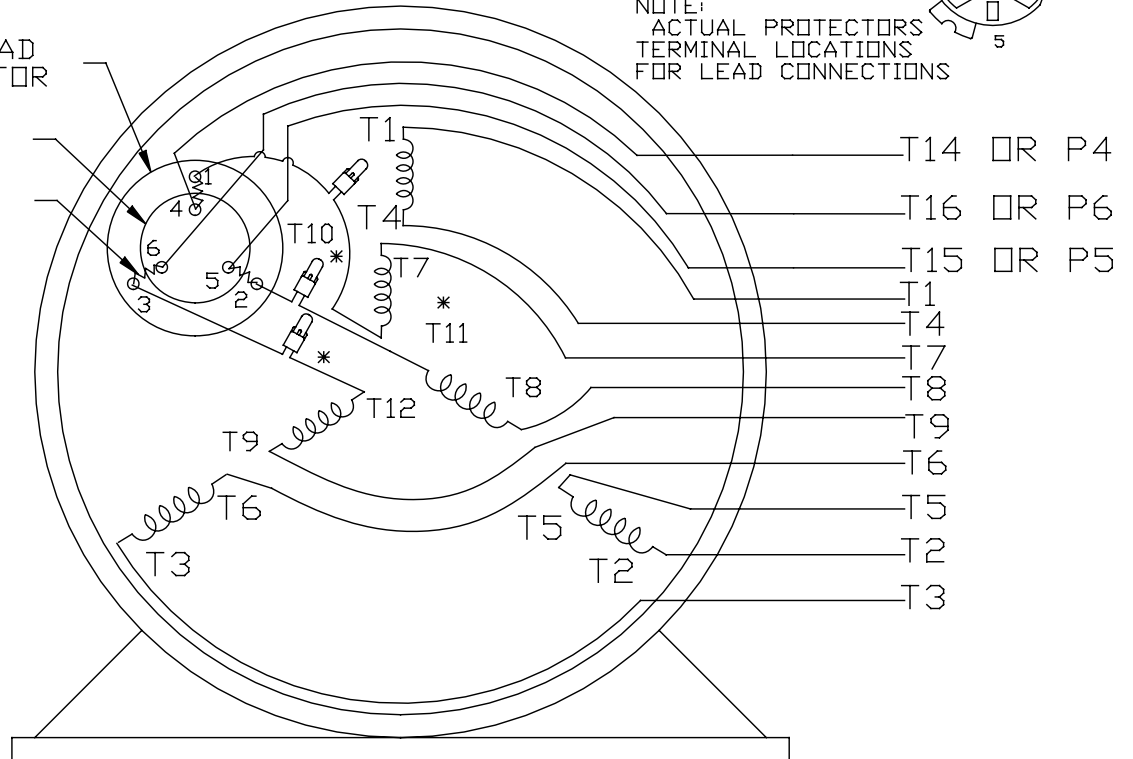


NOTE:
ACTUAL PROTECTORS
TERMINAL LOCATIONS
FOR LEAD CONNECTIONS

OVERLOAD
PROTECTOR

DISC

HEATER



VIEW OF TERMINAL END

* USE PRESSURE CONNECTORS FOR MT2 PLANT ONLY

T2K
T4D
T6AN

NO.	REVISION	BY & DATE	CHK	TOLERANCES UNLESS SPECIFIED		FINISH	DRAWN	SCALE	REV.
				DEC.	INCHES				
17	CHANGED LOGO FROM MARATHON TO REGAL	KIR 02/16/16	AB	DEC.	INCHES	Regal Beloit America, Inc.	KL	08-09-1993	1
16	PRESSURE CONNECTORS QUANTITY WAS 6	PVR 10/29/13	GR	.X	±.1		CHK	ML	08/10/1993
15	PRESSURE CONNECTORS ADDED	GR 03/04/13	SR	.XX	±.01	TITLE	APPD	GK	08/10/1993
14	ADDED ACTUAL PROECTOR VIEW CN 17481	KL 05/18/94		.XXX	±.005	CONNECTION DIAGRAM 3Ø-DUAL VOLT WITH OVERLOAD PROTECTO	SCALE	1=1	REF
13	REDRAWN IN AUTO CAD	KL 08/11/93		.XXXX	±.0005	MAT'L.	PREV		FMF
				±1/2*					
THIS DRAWING IN DESIGN AND DETAIL IS OUR PROPERTY AND MUST NOT BE USED EXCEPT IN CONNECTION WITH OUR WORK ALL RIGHTS OF DESIGN AND INVENTION ARE RESERVED THIS IS AN ELECTRONICALLY GENERATED DOCUMENT - DO NOT SCALE THIS PRINT				RFP	CAD FILE	EE7335	SIZE	DRAWING NO.	REV.
				DIST			A	EE7335	17

Data Sheet

5K49FN6381



Submittal
Data @ 460 V

Date: 6/20/2017

Customer:
Attention:
Submitted by: FAREEDA DUDEKULA

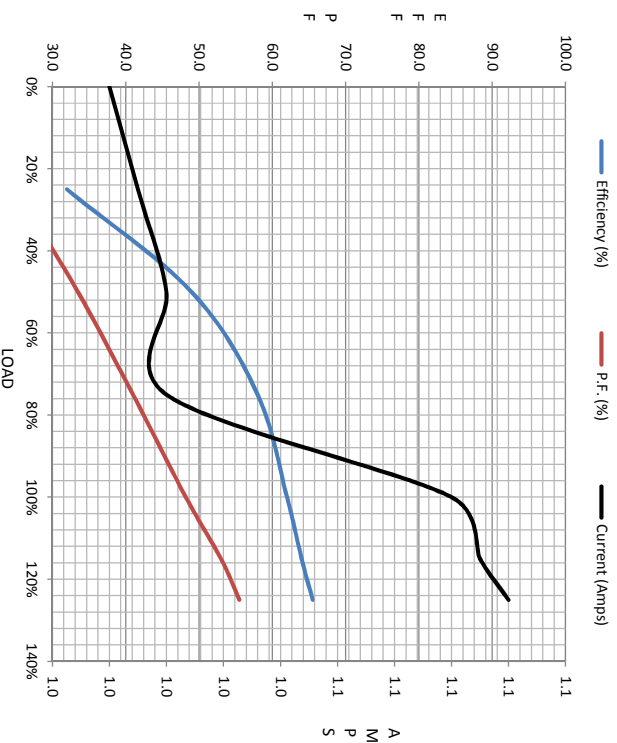
Load	Motor Load Data					LR
	0%	25%	50%	75%	100%	
Current (Amps)	0.98	0.99	1.00	1.00	1.10	4.6
Torque (ft-lb)	0.00	0.35	0.76	1.10	1.50	5.0
RPM	1200	1195	1180	1160	1140	0
Efficiency (%)		32.0	49.0	58.0	62.0	
P.F. (%)	0.0	25.0	33.5	41.0	48.2	53.0

Motor Speed Data

	LR	Pull-Up	BD	Rated	Idle
Speed (rpm)	0	400	920	1140	1200
Current (Amps)	4.6	4.1	3.1	1.10	0.98
Torque (ft-lb)	5.0	4.5	6.4	1.50	0.00

Information Block

HP	0.3			
Sync. RPM	1200			
Frame	56			
Enclosure	EPC			
Construction	TFR			
Voltage	230/460 V			
Frequency	60 HZ			
Design	B			
LR Code letter	M			
Service Factor	1.15			
Temp Rise @ FL	60 °C			
Duty	CONT			
Ambient	40 °C			
Elevation	1,000 feet			
Rotor/Shaft wkt	0.04 Lb-Fe			
Ret Wdg	ZT605 R2			
Sound Pressure @ 1M	62 dbA			
VFD Rating	NONE			
Outline Dwg	B-104189GE-631			
Conn. Diag	A-EE7335-GE			
Additional Specifications:				
EQUIV CKT (OHMS / PHASE)				
R1	R2	X1	X2	Xm
0.0000	0.0000	0.0000	0.0000	0.0000



Speed - Torque Curve

